



COMMUNITY RECOVERY RESOURCES

*5 Years Of The Campus Model:
A Local Solution For Today
A National Model For Tomorrow*



GRASS VALLEY
AUBURN
LINCOLN
ROSEVILLE
KINGS BEACH
TRUCKEE

2016-2017
Annual
Report



MESSAGE FROM CoRR'S PRESIDENT, CEO & DEPUTY CEO

Dear Friends of CoRR,

We are grateful to be once again sharing an annual report with you that demonstrates tremendous service and outcomes as we provide life-changing, and life-saving, services. As we celebrate 5 years at the Campus, and over 40 years of service, we know we can be successful in treating and managing a disease that can cause immense suffering, and even death. We see that hope and success every day as babies and young children get their parents back, teens find strength in themselves, adults recover meaning and purpose as contributive citizens, and families are reunited. Our growth and evolution can be attributed to the dedication of our staff, the increasing effectiveness of our evidence-based care, and the support of our community.

But even as we can celebrate these successes, we face tremendous challenge. We are all painfully aware of the tragedy of the opiate epidemic, as we face the ultimate loss of loved ones—sons, daughters, parents, spouses. This public health catastrophe has left millions of Americans with a chronic life-threatening disease. Neighborhoods and communities are suffering as a result of alcohol- and drug-related crime and violence, abuse and neglect of children, and the increased costs of health care associated with substance misuse.

As our Surgeon General noted, “most Americans know someone with a substance use disorder, and many know someone who has lost or nearly lost a family member as a consequence of substance misuse. Yet, at the same time...Substance use disorder treatment in the United States remains largely segregated from the rest of health care and serves only a fraction of those in need of treatment”.

We are here to change that. Because we believe in the value of all life. We believe in alleviating suffering, and that a healthy, joyous life of meaning is not only possible, but should be expected. **We know for sure that there is reason for hope.** Whatever challenges lie ahead, the individuals and families we serve remain at the heart of everything we do. It is their resilience and indomitable spirit that have inspired us for decades—and will energize us for years to come.

Please know that the important work of Community Recovery Resources would not be possible without you, our loyal donors. We couldn't be more grateful for your confidence and need your **continued** support.



Warren Daniels
CEO



Steve Martino
Board President



Ariel Lovett
Deputy CEO

FROM VISION TO REALITY: 5 YEARS AT THE CAMPUS

- | | | | |
|-------------|--|-------------|---|
| 2005 | Local leaders declare methamphetamine at crisis levels | 2011 | Local contractors break ground on the Campus, Capital Campaign is launched |
| 2007 | Purchase of homes on East Main, Brentwood | 2012 | Doors open at the Campus |
| 2008 | California Endowment funds business plan for Campus | 2017 | Successful capital campaign generates nearly \$2 million in donations to support the Campus, and the community celebrates 5 years of life saving services |
| 2009 | Submission of proposal to USDA Rural Development | | |
| 2010 | USDA Approves \$9.3 million loan | | |



CELEBRATING FIVE YEARS AT THE CAMPUS 2012-2017

The Campus offers hope to thousands each year as people of all ages find compassionate and quality services to heal from trauma, substance use disorders, mental health challenges, and related health issues.

Families are the motivation and heart of the Campus. About 100 children are reunified with their families each year through Mothers in Recovery and Hope House programs ... **an estimated annual savings of \$2,214,000 in placement costs. (Over 5 years, that's \$11,070,000).**

Between 110-150 children nurtured in CoRR's child development center each year, or over 625 children over five years. This is how we begin to end the cycle of substance use disorder, poverty, crime and family violence, and *begin a story of health, joy, and wellness.*



Courtesy of Sugar Pine Studios

The Campus Outpatient Center serves about 250 people monthly with outpatient drug treatment and education programs, including intensive outpatient, counseling, therapy, teen programs, Mothers in Recovery, parenting classes, anger management and DUI programs. In the five years, more than 700 women have been supported by Grass Valley Mothers in Recovery with parenting, counseling, therapy, and life-skills.

In addition, partnering with Western Sierra Medical Clinic, the Campus has served 342 people with 1,254 visits for primary care, with diabetes, hypertension, and hepatitis C as the top three primary health issues.

About 100 Nevada County teens are served each year, in schools or in outpatient programs at CoRR's Campus.

The Campus Residential programs have served more than 2,000 individuals in this critical phase of treatment.

Hope House residential treatment program has helped 1,087 women find recovery (plus helped about 200 little ones who lived with their moms).

Prior to the Campus, there was no residential program like it for men, and now *1,094 men have sought treatment at Serenity House.*

In an average year, about 440 individuals access residential treatment, with around 90 people accessing withdrawal management—a life saving resource that was previously unavailable in this community.

The Campus Supportive Housing Programs provide a safe environment, prevent homelessness, and encourage development of lifelong skills to achieve long-term recovery, wellness, and self-sufficiency.

■ CoRR's Grass Valley Campus offers 36 beds in supportive housing. That's about 12,000 bed nights each year that women, men and children are not homeless or in unsafe places: or *60,000 safe nights in 5 years.*



2016-2017 PROGRAMS OVERVIEWS & HIGHLIGHTS



CoRR's comprehensive offering provides support to our community members wherever they are in their illness, or wellness, to achieve optimal health, joy, and meaning.

COMMUNITY OUTREACH & PREVENTION ACTIVITIES

Hundreds of presentations at schools, clubs, hospitals, service clubs, health fairs, and community events from Truckee to Roseville let people in our community know that help is there when they need it, and how to reduce the risk of substance use disorder for themselves, and their children.

RECOVERY & WELLNESS SERIES

The series has welcomed more than 600 participants this year in a no-cost series learning about topics related to health, like managing depression; addressing trauma in teens; supporting children who have experienced familial substance use disorders, or learning about the opiate epidemic.

OUTPATIENT TREATMENT & SUPPORT

CoRR has worked with approximately 4,000 people struggling with substance use disorders and changing the course of their lives — step-by-step, moment-by-moment, one day at a time.

Primary outpatient treatment programs in Truckee, Kings Beach, Grass Valley, Auburn, Lincoln and Roseville provide counseling, evidence-based curriculum and support to men, women and teens. Intensive outpatient supports a higher level of care, and Mothers in Recovery offers specialized support for pregnant and parenting women.



CHILD CARE & FAMILY DEVELOPMENT

These services play an important role in connecting parents to programs that help them achieve longer term goals. Through services like therapy, case management, social work, education and quality child development programs, families have a greater ability to heal. CoRR's staff meets with parents to identify and ensure age-appropriate development, teach child development techniques, and support each child's achievement of developmental milestones. CoRR's Child Development Centers have nurtured 104 in Grass Valley, 44 in Roseville and 35 in Auburn.

WEEKLY FAMILY RECOVERY EDUCATION NIGHTS

Located in Grass Valley, Truckee, Roseville and Auburn, these nights are open to all, offering no-cost sessions for families to learn about supporting relatives in recovery and caring for themselves in the process.



2016-2017 PROGRAMS OVERVIEWS & HIGHLIGHTS

ADOLESCENT PROGRAMS

These help 615 teenagers regain health, focus, and prepare for a bright future.

■ Student Assistance Programs provide prevention support and education about substance use among students at 18 high schools in Placer and Nevada Counties. At-school support helps to discourage drug, alcohol, and tobacco use with at-risk teens and support kids to stay in school. With the support of the Nevada County and Placer County school districts, CoRR has impacted 449 adolescents this past year.

■ Outpatient treatment for teens in Roseville, Auburn, and Grass Valley, provides life-changing help to teens with substance use disorders and emerging mental health issues. CoRR provides tools and techniques to empower adolescents to handle challenging family and social situations, address trauma, understand themselves, and learn new ways to live free of alcohol and other drugs. 166 adolescents.

DUI & EDUCATION PROGRAM

CoRR is licensed by the DMV and State of California's Department of Alcohol and Drug Programs to provide DUI treatment services for first- and/or multiple-offender. With the goal of community safety, CoRR's DUI program is designed to encourage participants to change attitudes and behavior. CoRR has helped hundreds of participants at all six CoRR locations.



MOTHERS IN RECOVERY

Everyday CoRR staff stands together for the empowerment and dignity of women and families. Mothers in Recovery contributes to restoring confidence, strength and health as women learn practical living skills and overcome trauma. This past year CoRR has served 191 women in Grass Valley, 70 women in Auburn, and 66 women in Roseville getting support to be clean, strong, and healthy.

RESIDENTIAL/INPATIENT TREATMENT & WITHDRAWAL MANAGEMENT

A unique asset-based treatment and wellness plan is developed to create the greatest opportunity for success for each individual. Residential treatment and withdrawal management provide intensive support to begin the journey to recovery. CoRR supports 68 beds of residential treatment for adult men and women:

- Auburn Campus Residential: 28 beds for adult men and women
- Grass Valley Campus Hope House: 20 beds for women, and their children
- Grass Valley Campus Serenity House: 20 beds for men

TRANSITIONAL HOUSING

Many clients experience multiple complex issues simultaneously to include the imminent prospect of homelessness, unemployment, mental health struggles, food insecurity, and lack of education, transportation and other unmet needs. The impact on the community can be reduced community safety, and high costs to public systems. We continue to grow to meet this challenge, and CoRR now provides 80 beds of transitional supportive housing through Placer and Nevada County communities; *that's 29,200 bed nights per year.* 145 women and 168 men experienced targeted supportive services and addressed housing barriers which led them to self-sufficiency, and 50 children were safely housed with their parents.



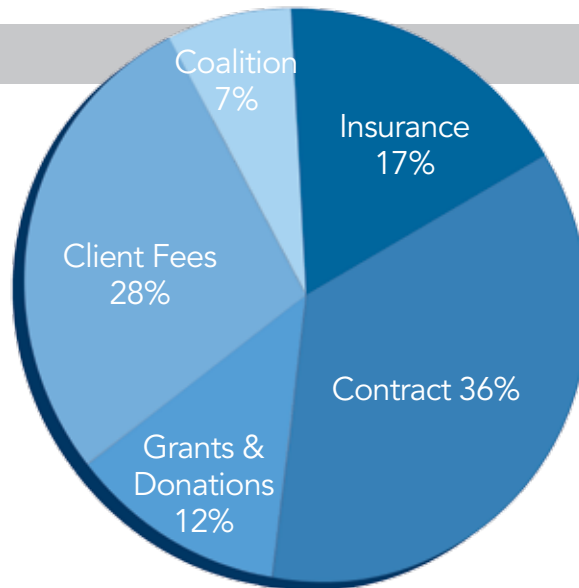
SUSTAINING THE MISSION

Our mission is to support the communities we serve with a full spectrum of wellness-focused programs to reduce the social, health and economic impact on families and children from all types of substance abuse and behavioral health issues.

CoRR leverages public and private funding through contracts, insurance revenue, fees, grants, and donations to maximize our outcomes for families and communities.

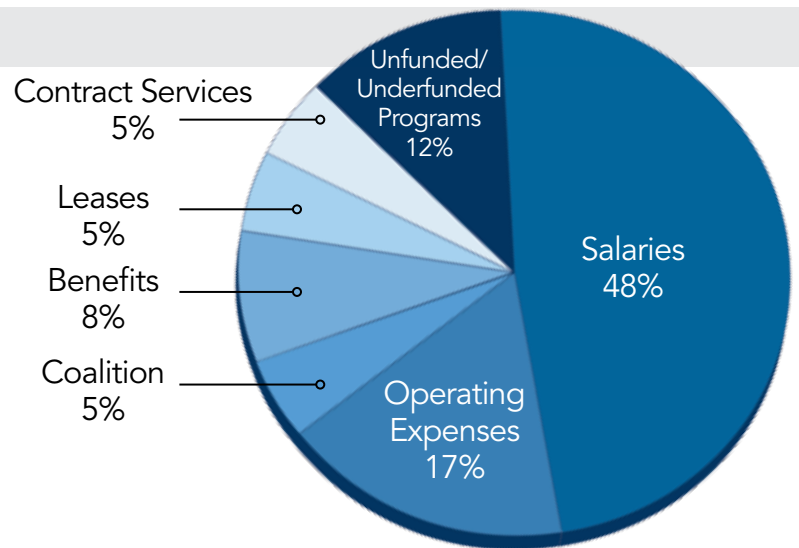
REVENUE

Contract	\$2,785,004.28
Grants & Donations	\$937,295.62
Client Fees	\$2,148,565.16
Coalition	\$531,227.76
Insurance	\$1,356,644.39
Total	\$7,758,737.21



EXPENSES

Salaries	\$3,715,963.69
Operating Expenses	\$1,306,991.06
Coalition	\$382,343.17
Benefits	\$657,409.55
Leases	\$362,395.00
Contract Services	\$378,954.73
Unfunded/Underfunded Programs	\$954,680.01
Total	\$7,758,737.21



We thank our donors for demonstrating corporate responsibility and individual generosity. With their gifts, our donors are giving for change, as they:

- Prevent homelessness
- Make our community safer--reducing crime
- Reduce out-of-home placement for children
- Keep families together
- Prevent child abuse
- Reduce unemployment, promote economically vibrant communities
- Prevent domestic violence



THE CoRR FOUNDATION LEVERAGING POWERFUL OUTCOMES



The CoRR Foundation is established with the mission to ensure resources to support CoRR's recovery and wellness programs to support individuals and families and build safe, strong communities. An independent nonprofit, The CoRR Foundation raises funds for CoRR with the belief that there is perhaps no better investment than in recovery and wellness services that reduce homelessness; alleviate child abuse and neglect, and domestic violence; reduce healthcare and criminal justice costs; increase community safety, and support local economies through a revived workforce.

This work needs your help. Becoming a monthly donor is an easy way to support CoRR programs and services through secure, recurring donations from your credit/debit card or bank account.

The CoRR Foundation sponsors the Bill Schultz Golf Classic, the Ed Bonner Golf Classic, and the upcoming Winter Gala, February 24th, at Morgan Creek Country Club.

To learn more, please visit our website at www.CoRR.us, call the office at 530-273-9541 or send this form to our office at 180 Sierra College Drive, Grass Valley CA, 95945

PLEASE CONSIDER A MONTHLY DONATION! OVER A YEAR, WHAT AN IMPACT THESE SMALL GIFTS HAVE!

- \$10 each month can help **provide healthy snacks for babies and children** in our care
- \$25 monthly allows counselors to provide interventions to **help families in crises**
- \$50 per month equals **six months of supportive housing** for a woman and child

Or, choose a one-time donation in the envelope included.

Donate online: www.corr.us click on DONATE button. Call: 530-273-9541 x 217 or send in a donation in the envelope included.



WHY THIS IS SO IMPORTANT

LEAVE YOUR LEGACY WITH CoRR

Include CoRR in your estate plans and leave a legacy of hope. When you make a gift, you've made an everlasting investment in your values, your hopes and your dreams.

BECAUSE OF YOU

Everything we do is made possible by our devoted and generous supporters. We are honored to recognize those who contribute. Please visit our website at www.corr.us/connect to learn more about ways to give, and our donors.

WHAT YOUR GIFT DOES FOR THE COMMUNITY

Look what you've done! With one gift to CoRR, your investment works to prevent homelessness; reduce out-of-home placement for children; prevent child abuse; prevent domestic violence; reduce crime and make our community safer; keep families together; reduce unemployment, and promote economically vibrant communities; and reduce addiction within all sectors of our society.

Only 10% of the 23 million Americans with a substance use disorder get the treatment they need. Addiction is treatable. People can and do recover to lead healthy productive lives. That's why, with your support, we provide treatment and in doing so inspire hope, grow health, heal families, and strengthen communities.

CoRR is honored to carry your aspirations forward in helping more individuals, families and communities find freedom from addiction.



Community Recovery Resources
180 Sierra College Drive
Grass Valley, CA 95945
www.CoRR.us



PLEASE REMEMBER US IN YOUR WILLS AND TRUSTS

Your gift changes lives

